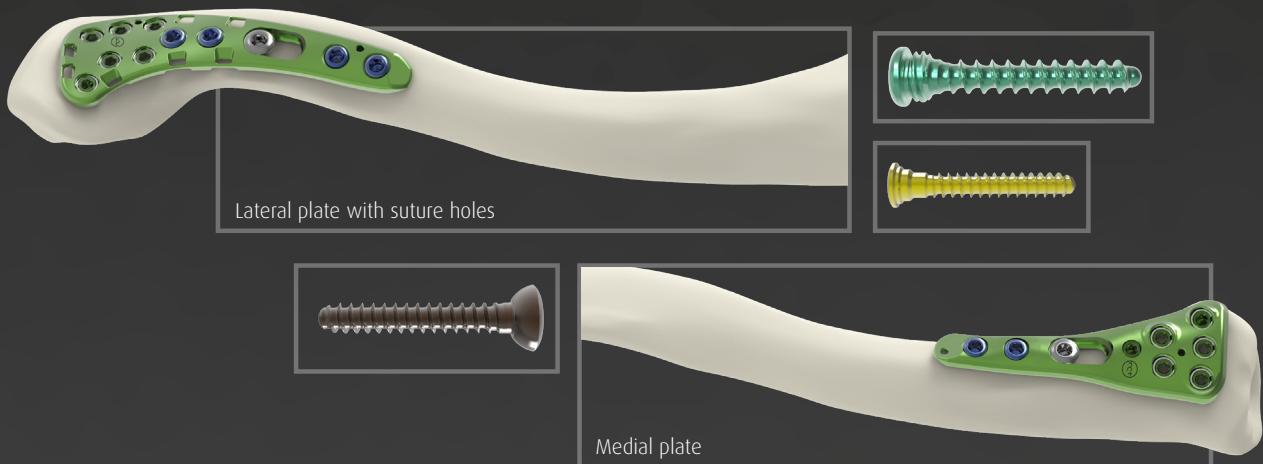




## ALIANS CLAVICLE UPDATE

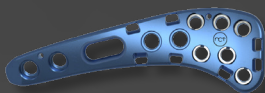
### Lateral plate with suture holes & medial plate & optional Ø2.8 mm screws



Lateral plate with suture holes

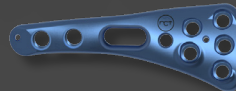
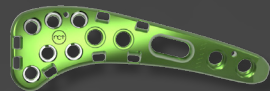
Medial plate

- Lateral plate with suture holes for acromio-clavicular disjunction
- Dedicated implant for fractures of the medial third of the clavicle
- Optional Ø2.8 mm screws compatible with the Ø3.5 holes of the Alians Clavicle range



CSTxL1

LATERAL PLATES WITH SUTURE HOLES



CBTxP1

MEDIAL PLATES



#### OPTIONAL Ø2.8 MM SCREWS



SOT2.8Lxx

Ø2.8 MM LOCKING SCREWS



QOT2.8Lxx

Ø2.8 MM NON LOCKING SCREWS



CET2.8Lxx

Ø2.8 MM COMPRESSION SCREWS

#### NEWCLIP TECHNICS

PA de la Lande Saint Martin  
45 rue des Garottières  
44115 Haute-Goulaine, France  
+33 (0)2 28 21 23 25  
orders@newcliptechnics.com  
www.newcliptechnics.com

#### NEWCLIP TECHNICS USA

Newclip USA  
642 Larkfield Center  
Santa Rosa CA 95403, USA  
+1 707 230 5078  
customerservice@newclipusa.com  
www.newclipusa.com

#### NEWCLIP TECHNICS GERMANY

Newclip GmbH  
Pröllstraße 11  
D-86157 Augsburg, Deutschland  
+49 (0)821 650 749 40  
info@newclipgmbh.com  
www.newclipgmbh.de

#### NEWCLIP TECHNICS JAPAN

Newclip Technics Japan K.K.  
KKK Bldg. 502, 3-18-1 Asakusabashi  
Taito-Ku, Tokyo, 111-0053, Japan  
+81 (0)3 58 25 49 81  
Fax: +81 (0)3 58 25 49 86  
www.newcliptechnics.com

#### NEWCLIP TECHNICS AUSTRALIA

Newclip Australia  
3B/11 Donkin Street  
West End 4101, Australia  
+61 (0)2 81 886 110  
solutions@newclipaustralia.com  
www.newcliptechnics.com